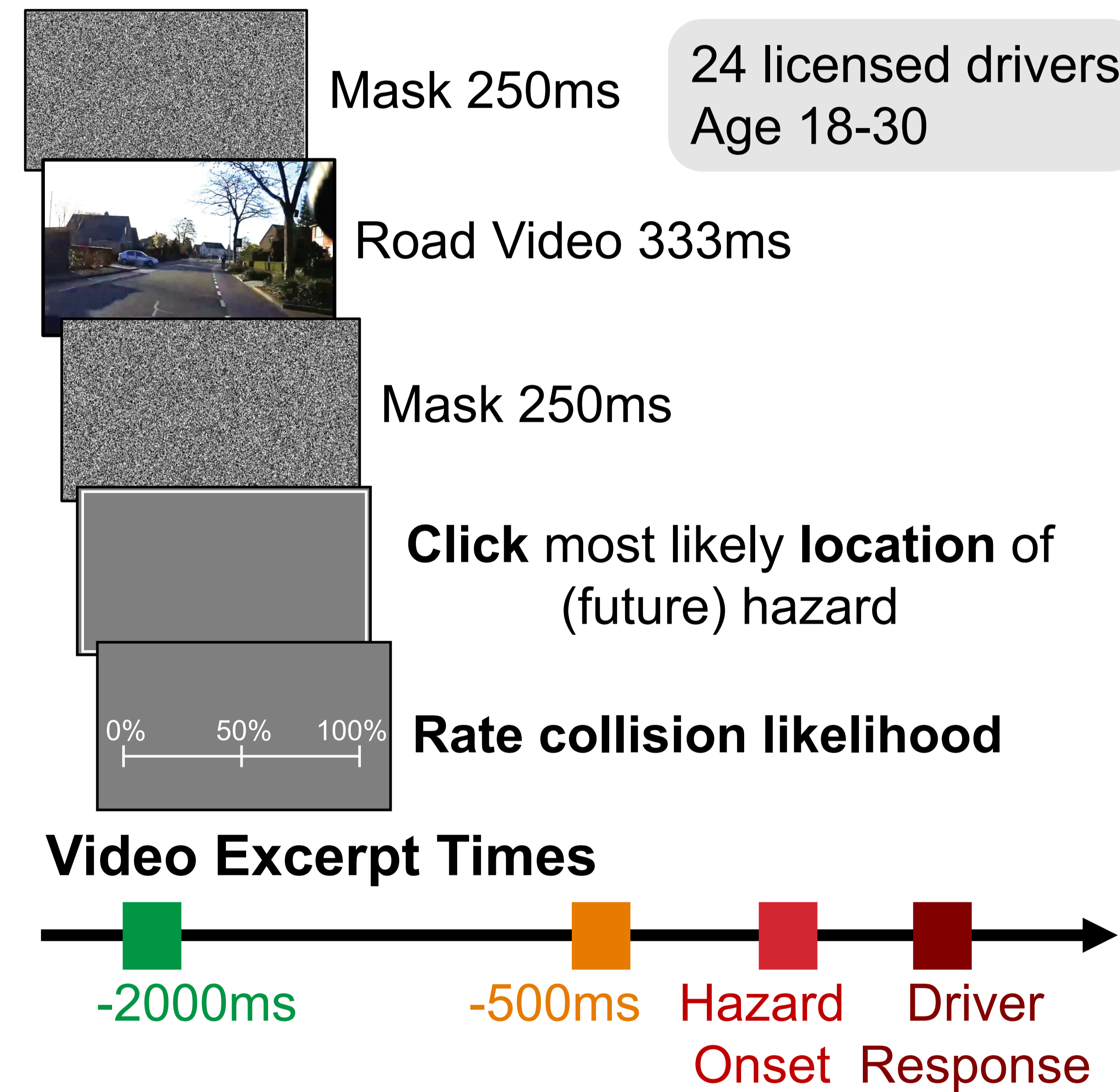


Prediction is a fundamental cognitive process, and helps drivers detect road hazards (Song et al., 2026, JEP:HPP).

How **accurate** are hazard predictions?
Do individuals **agree** with each other?
Do predictions **guide** gaze?



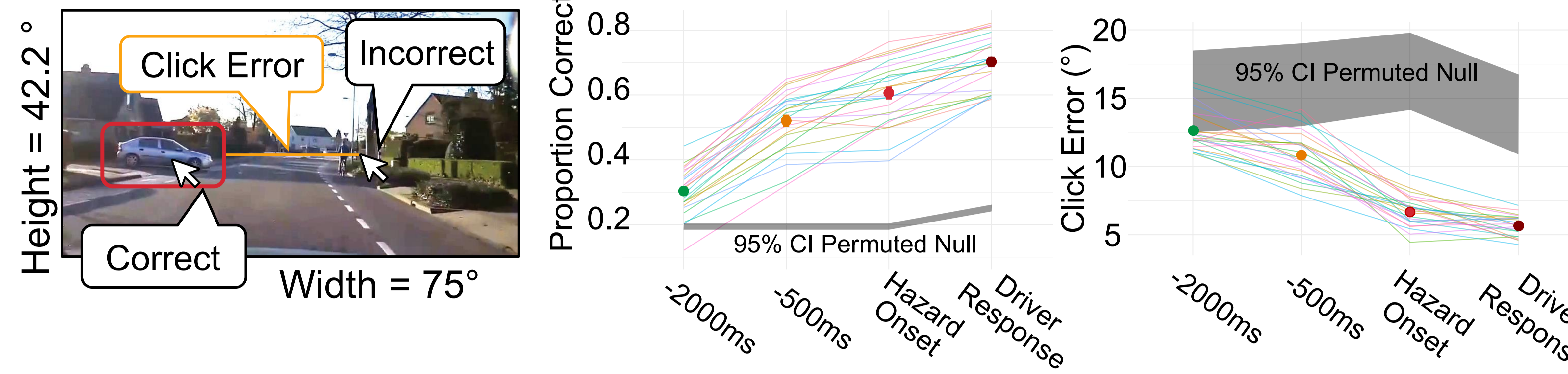
Road Hazard Stimuli



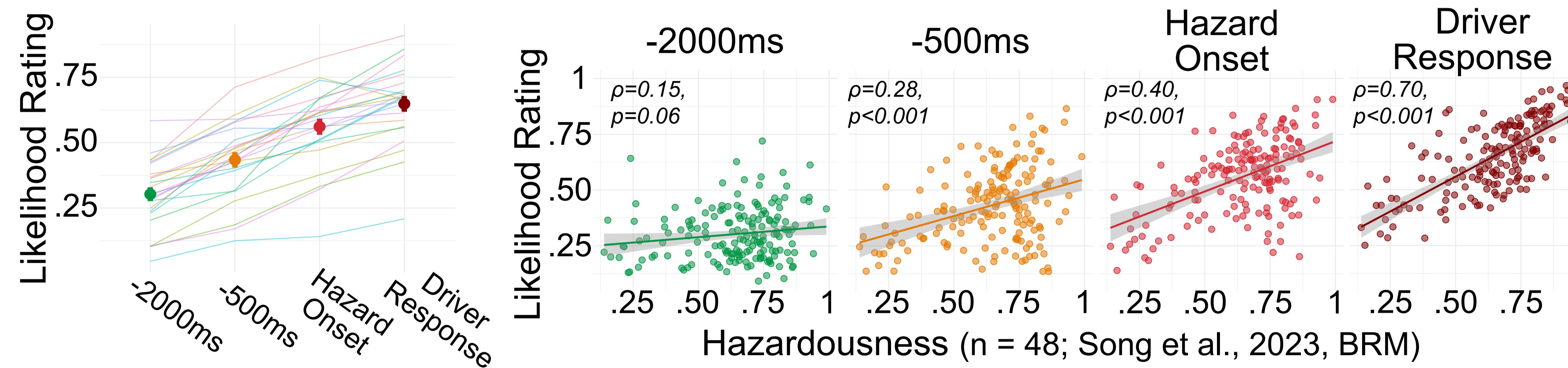
(Song et al., 2023, BRM)
750 Real dashcam videos
434 hazardous events
Available on OSF



Prediction Accuracy

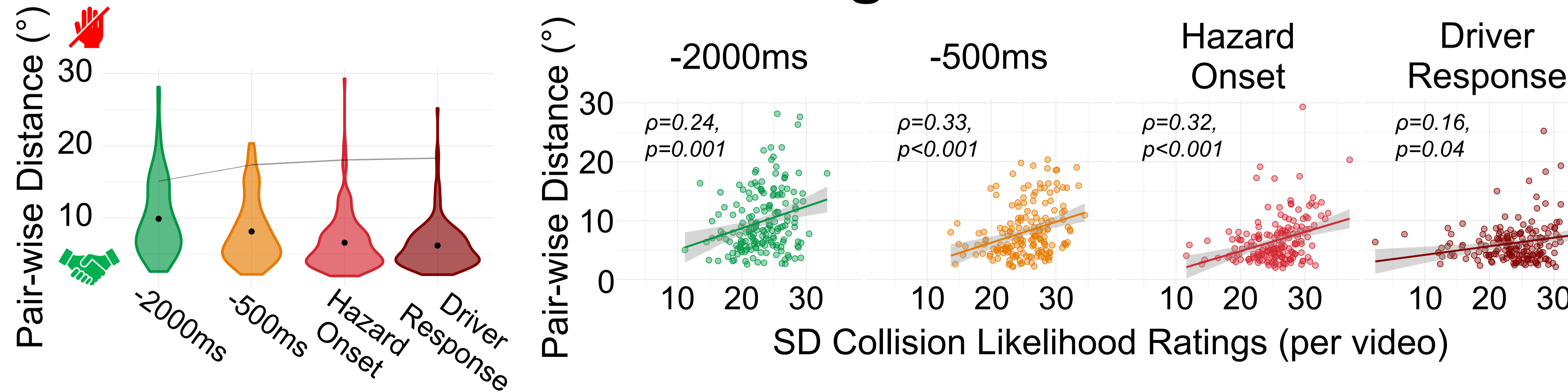


Predicted location of hazards are **more accurate than chance**



Collision likelihood ratings **correlate with hazardousness**

Prediction Agreement



Predictions are **moderately consistent among people**

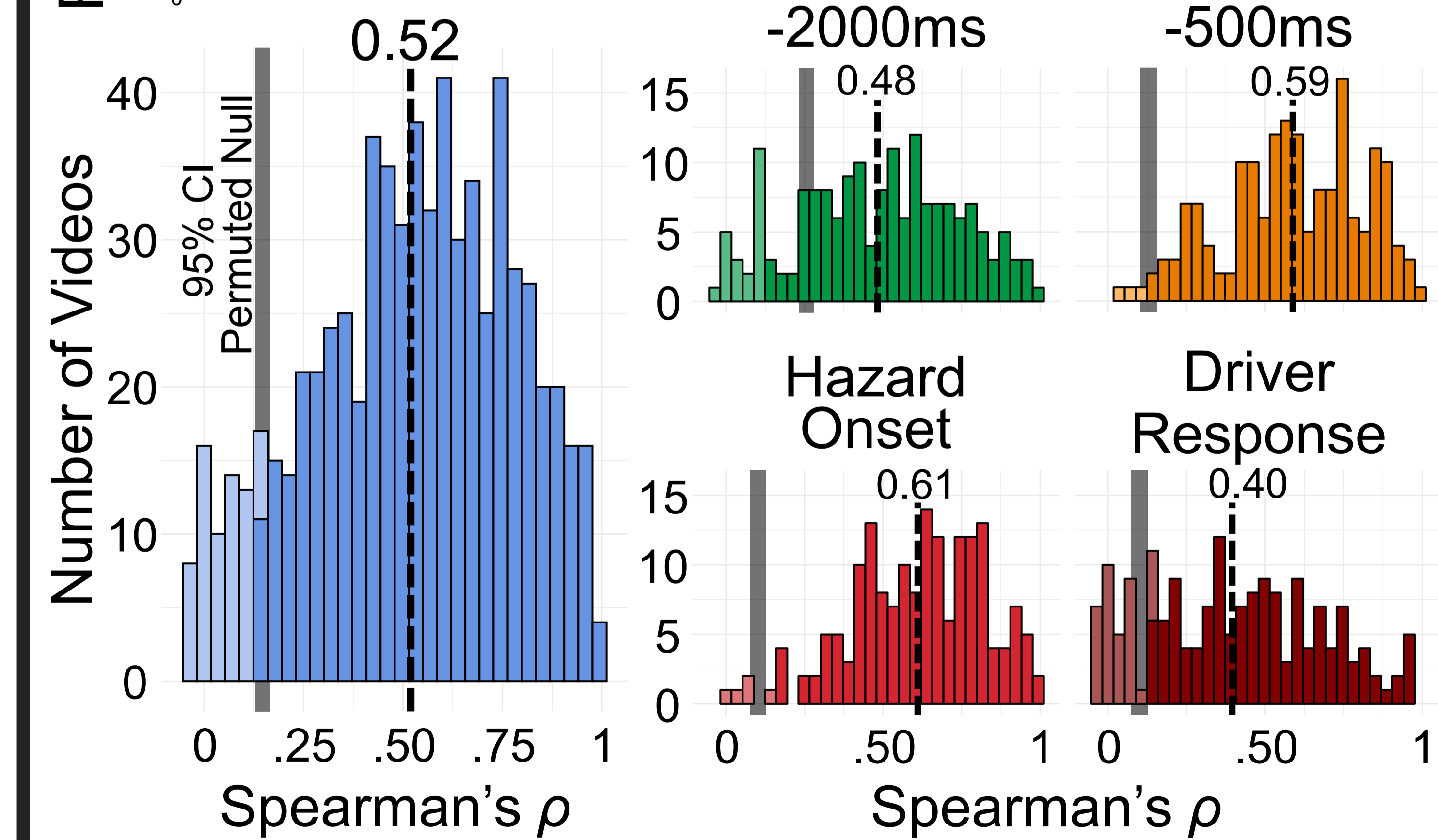
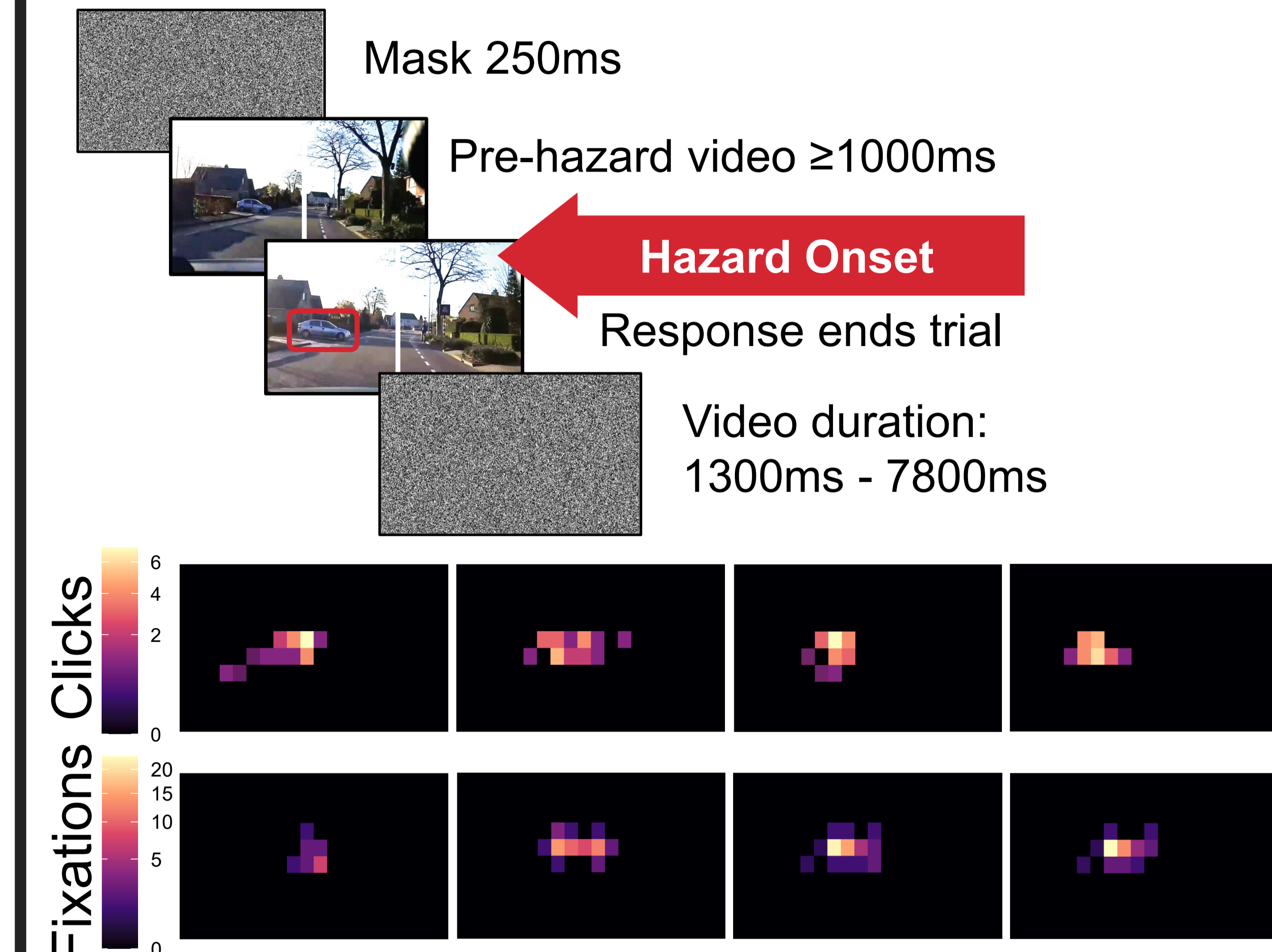
Prediction and Gaze

Prior Eye-Tracking Study

(Song et al., 2026, JEP:HPP)

n = 30

Localize the hazard when it appears (left or right)



Predictions and gaze are **correlated at all times**